

## Specs:

Bedrooms:	3
Bathrooms:	2-3
Square Footage:	2,896 Sq.Ft.
First Level:	2,280 Sq.Ft.
Second Level:	616 Sq.Ft.
Width	55'-9"
Depth:	69'-0"

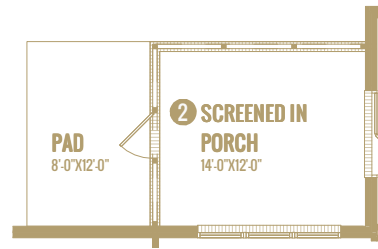
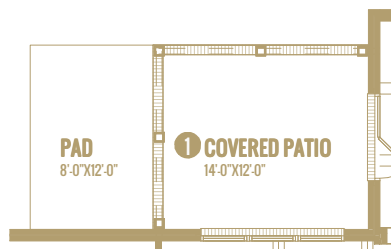
## Options Shown:

- 1 Covered Porch
- 2 Screened in Porch
- 3 Upper Level Bath
- 4 Built-ins
- 5 Drop Zone Built-in
- 6 Laundry Sink W/ Cabinets
- 7 Coffered Ceiling at Dining
- 8 Vaulted Ceiling at Great Room

Watercolors, illustrations, and floor plans are for marketing purposes only and are subject to change at builder's discretion. Square footage is outside veneer and should be independently verified. This is not a legal document.

8/1/2023 5:55:44 PM

# FLOOR PLAN: BERKSHIRE TRADITIONAL



Watercolors, illustrations, and floor plans are for marketing purposes only and are subject to change at builder's discretion. Square footage is outside veneer and should be independently verified. This is not a legal document. 8/1/2023 5:55:46 PM

# FLOOR PLAN: BERKSHIRE TRADITIONAL



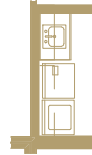
3 UPPER LEVEL BATH



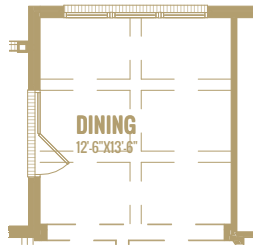
4 BUILT-INS



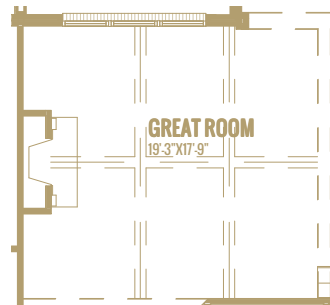
5 DROP ZONE BUILT-IN



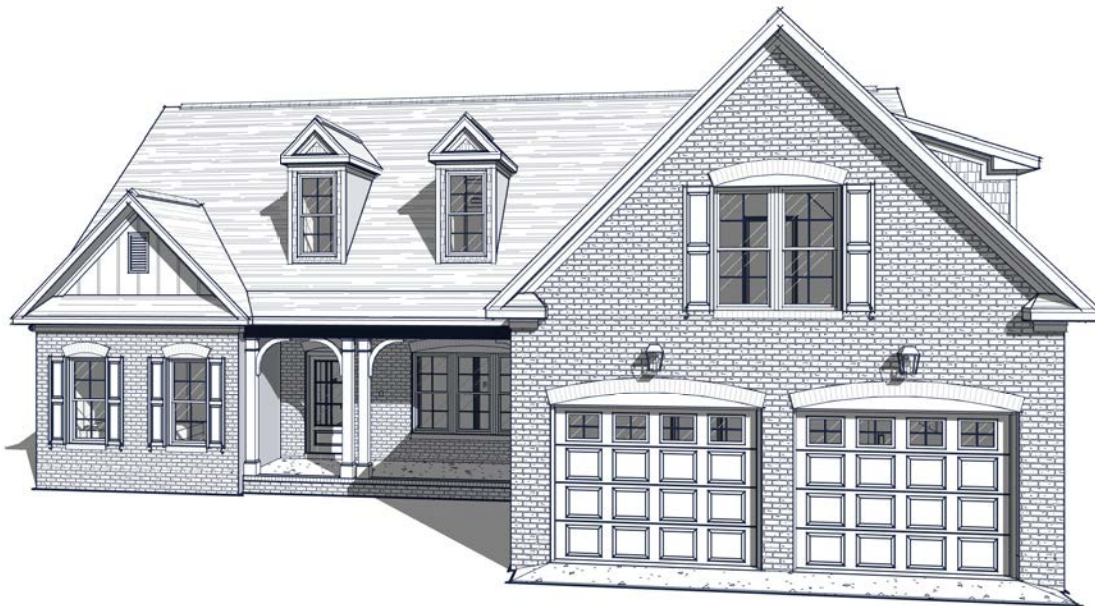
6 LAUNDRY SINK W/ CABINETS



7 COFFERED CEILINGS AT CASUAL DINING



8 VAULTED CEILING AT GREAT ROOM



Watercolors, illustrations, and floor plans are for marketing purposes only and are subject to change at builder's discretion. Square footage is outside veneer and should be independently verified. This is not a legal document.  
8/1/2023 5:55:50 PM